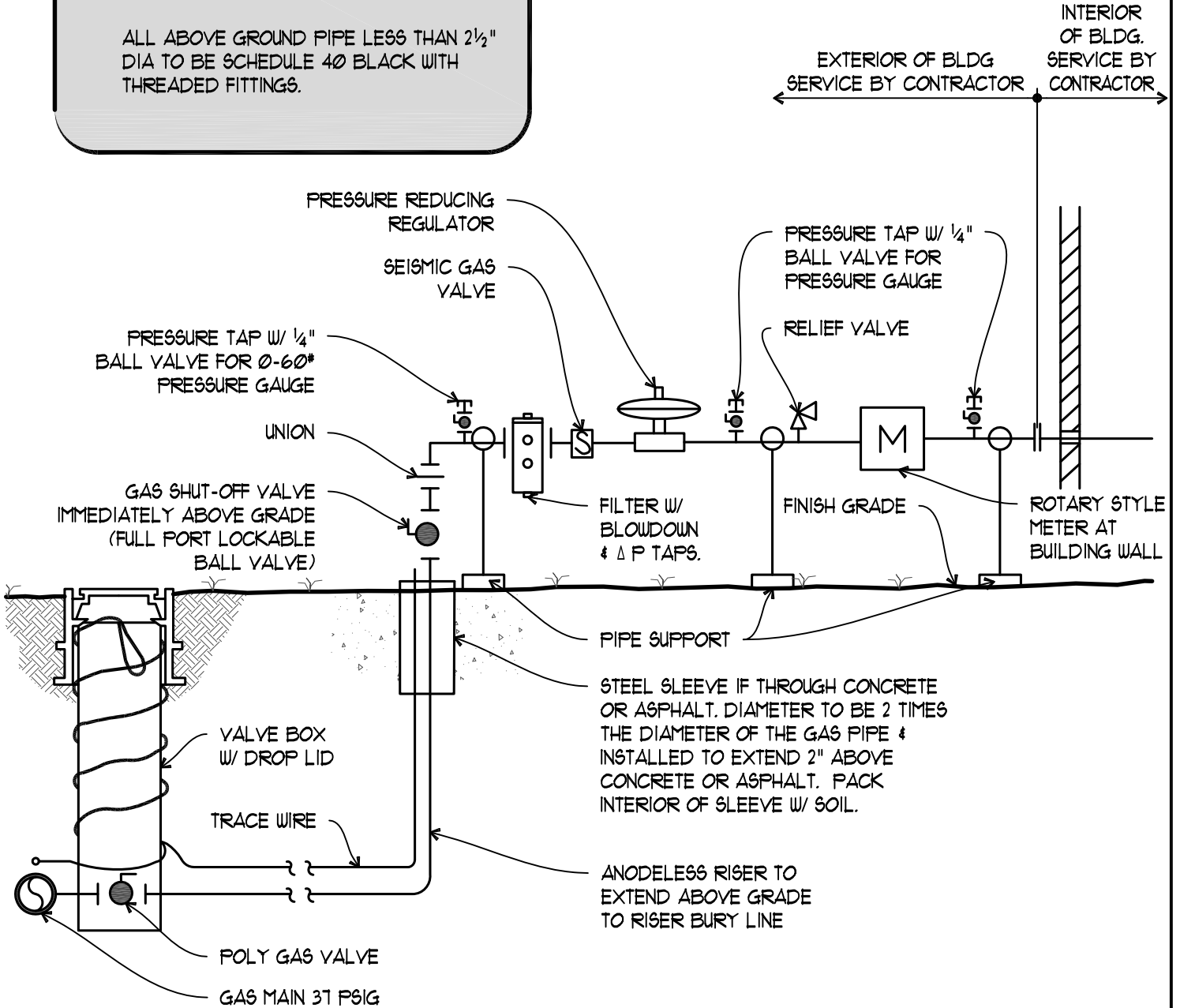


POLY GAS VALVES ARE QUARTER TURN OPEN/CLOSE.

ALL 2½" OR LARGER DIA ABOVE GROUND PIPE TO BE SCHEDULE 40 BLACK STEEL WITH WELDED FITTINGS.

ALL ABOVE GROUND PIPE LESS THAN 2½" DIA TO BE SCHEDULE 40 BLACK WITH THREADED FITTINGS.



# 1 GAS SERVICE ENTRANCE

Scale : N.T.S.

PROJECT TITLE  
**BUILDING DESIGN STANDARDS  
 GAS DISTRIBUTION SYSTEMS**



THE UNIVERSITY OF MISSISSIPPI  
 DEPARTMENT OF FACILITIES PLANNING  
 700 HATHORN ROAD UNIVERSITY, MISSISSIPPI 38677  
 TELEPHONE: 662.915.6767 FACSIMILE: 662.915.6788

PROJECT NO: • DATE ISSUED: • 09 SEP 2009 CAD FILE NO: • GDS DRAWN BY: • bdp CHECKED BY: • CMH REVISION/DATE: •

Plot Date: 09 SEPTEMBER 2009